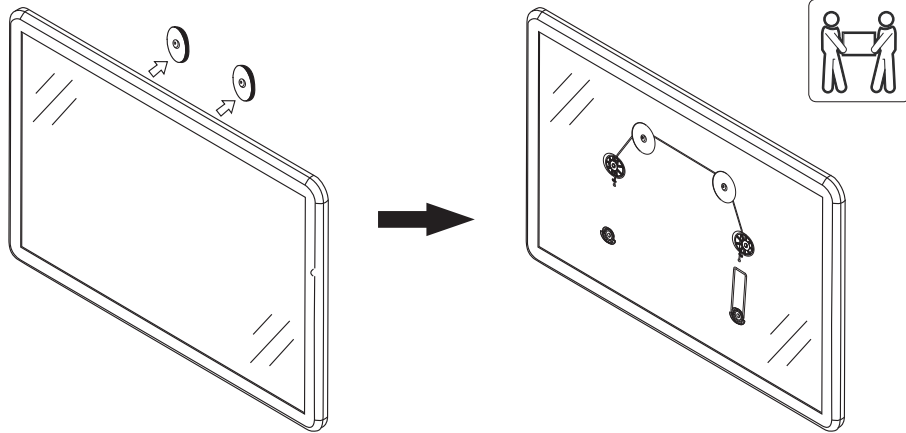
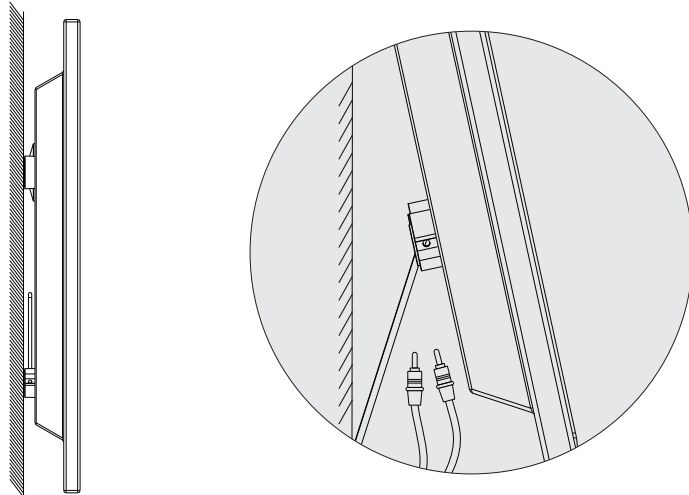


3. Hanging the TV onto the Wall Plate



After the wall mount has been safely secured to the wall, Carefully lift your TV and hook the wirerope into the wall plate rail. Make sure your TV is securely and correctly attached.

4. Cable Management



- Fold out the tilt supports to access the cables.
- Fold the tilt supports back once all cables have been installed.

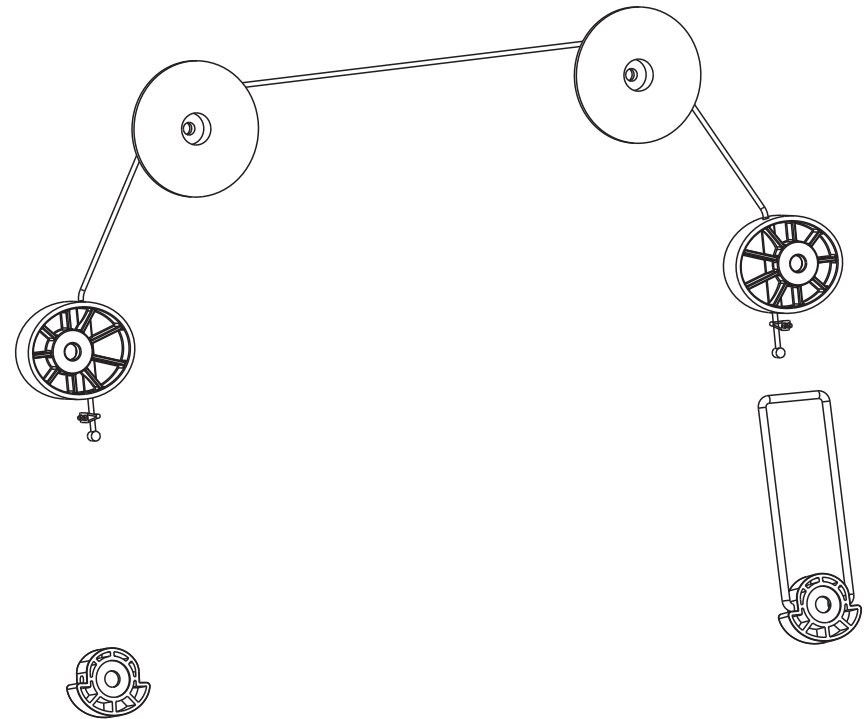
Maintenance

- Check that the bracket is secure and safe to use at regular intervals(at least every three months).
- Please contact your distributor if you have any questions.

xantron®

INSTALLATION MANUAL

LED TV Wall Mount



CAUTION: DO NOT EXCEED RATED LISTED WEIGHT. SERIOUS INJURY OR PROPERTY DAMAGE MAY OCCUR!

SLIMLINE-01X



100x100/200x200
400x400/600x600
800x800

70"
MAX

50kg
(110lbs)
RATED

NOTE: Read the entire instruction manual before you start installation and assembly.

WARNING

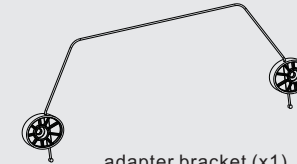
- Do not begin the installation until you have read and understood all the instructions and warnings contained in this installation sheet. If you have any questions regarding any of the instructions or warnings, please contact your local distributor.
- This mounting bracket was designed to be installed and utilised **ONLY** as specified in this manual. Improper installation of this product may cause damage or serious injury.
- This product should only be installed by someone with good mechanical ability who has basic building experience and fully understands this manual.
- Make sure that the supporting surface will safely support the combined weight of the equipment and all attached hardware and components.
- If mounting to wood wall studs, make sure that mounting screws are anchored into the center of the studs. The use of a stud finder is highly recommended.
- Always use an assistant or mechanical lifting equipment to safely lift and position the equipment.
- Tighten screws firmly, but do not over tighten. Over tightening can cause damage to the items, This greatly reduces their holding power.
- This product is intended for indoor use only. Using this product outdoors could lead to product failure and personal injury.

Component Checklist

IMPORTANT: Ensure that you have received all parts according to the component checklist prior to installation. If any parts are missing or faulty, telephone your local distributor for a replacement.



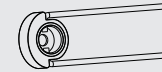
wall plate (x2)
A



adapter bracket (x1)
B



supporting spacer (x1)
C



supporting spacer (x1)
D



clamp (x2)
E

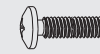


cable tie (x1)
F

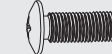


wrench (x1)
G

Package M



M5x14 (x4)
M-A



M6x14 (x4)
M-B



M6x30 (x4)
M-C



M8x30 (x4)
M-D



M8x50 (x4)
M-E



D5 washer (x4)
M-F



D8 washer (x4)
M-G

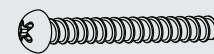


small spacer (x8)
M-H

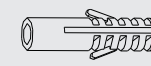


big spacer (x8)
M-I

Package W



ST6.3x50 (x2)
W-A

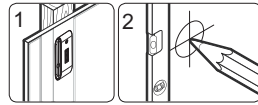
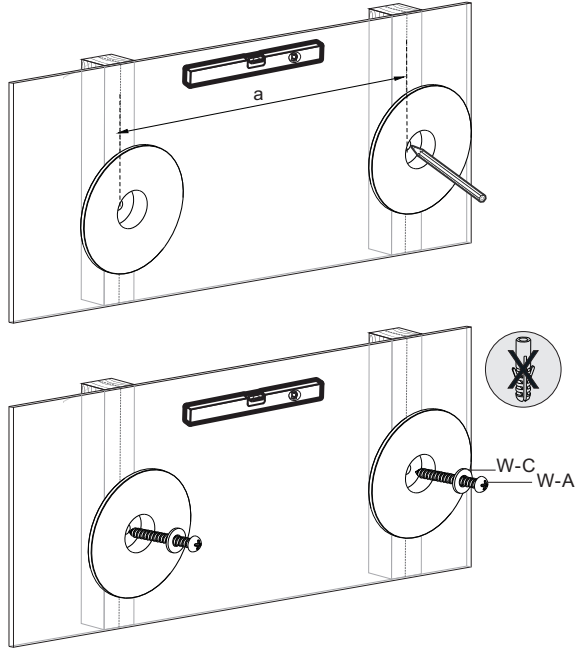
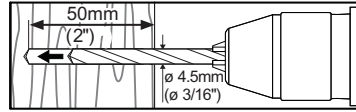
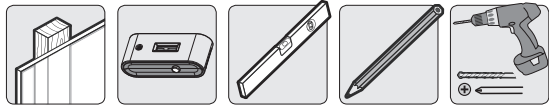


concrete anchor (x2)
W-B

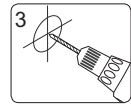


D6 washer (x2)
W-C

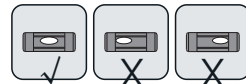
1a. For Wood Stud Wall Mounting



Find and mark the exact location of mounting holes



Drill pilot holes



Screw the wall mount onto the wall

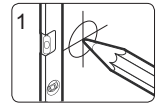
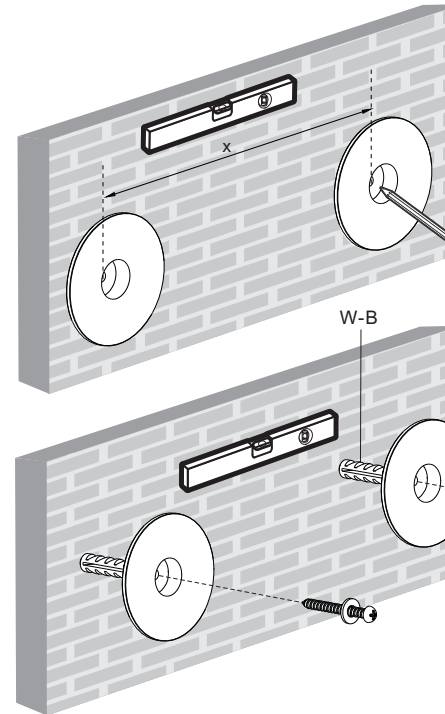
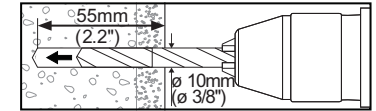
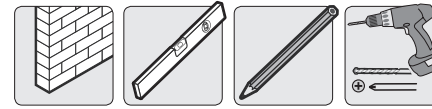
Table 1a.1
The letter "a" stands for the wood stud interval, The letter "L" (see step 2) stands for the actual length of wire rope.

L \ a	406mm(16")	450mm(17.7")	600mm(23.6")
VESA 200x200mm and below			
400x400mm	700mm	710mm	
600x600mm	750mm	750mm	880mm
800x800mm	880mm	880mm	900mm

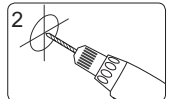
⚠ WARNING

- Make sure that mounting screws are anchored into the center of the studs. The use of a stud finder is highly recommended.
- Installers are responsible to provide hardware for other types of mounting situations.
- Installers must verify that the supporting surface will safely support the combined weight of the equipment and all attached hardware and components.

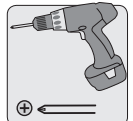
1b. For Solid Brick and Concrete Mounting



Mark the exact location of mounting holes



Drill pilot holes



Screw the wall mount onto the wall

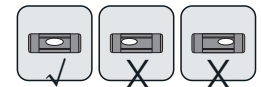


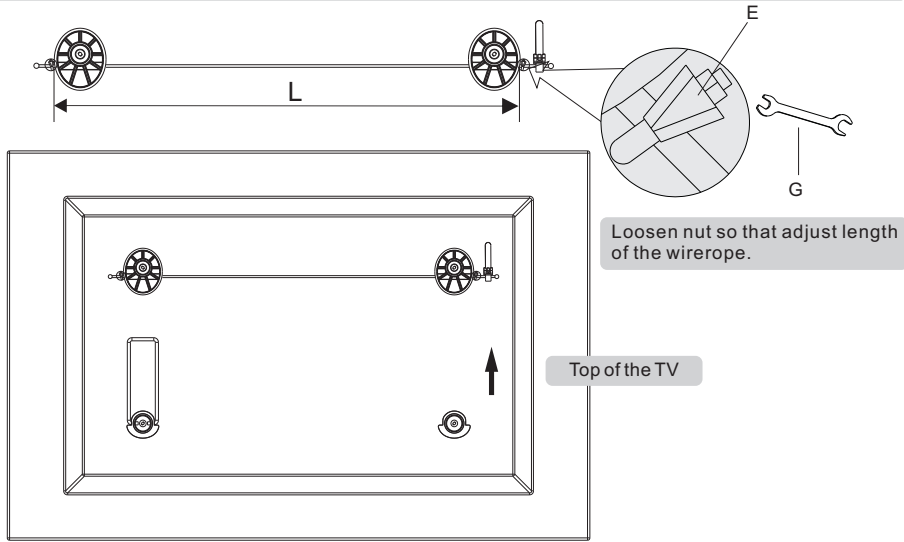
Table 1b.1
The letter "X" stands for the distance between wall plate, The letter "L" (see step 2) stands for the actual length of wire rope.

VESA	200x200mm and below	400x400mm	600x600mm	800x800mm
X	80-100mm	180-220mm	380-420mm	580-620mm
L	400mm	500mm	750mm	900mm

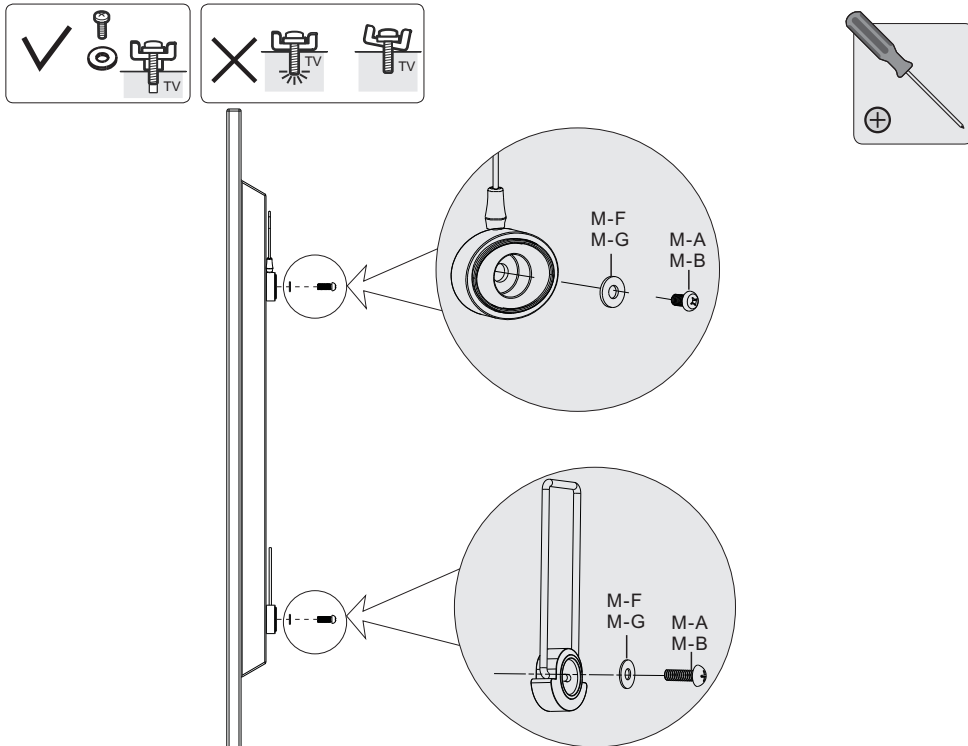
⚠ WARNING

Installers must verify that the supporting surface will safely support the combined weight of the equipment and all attached hardware and components.

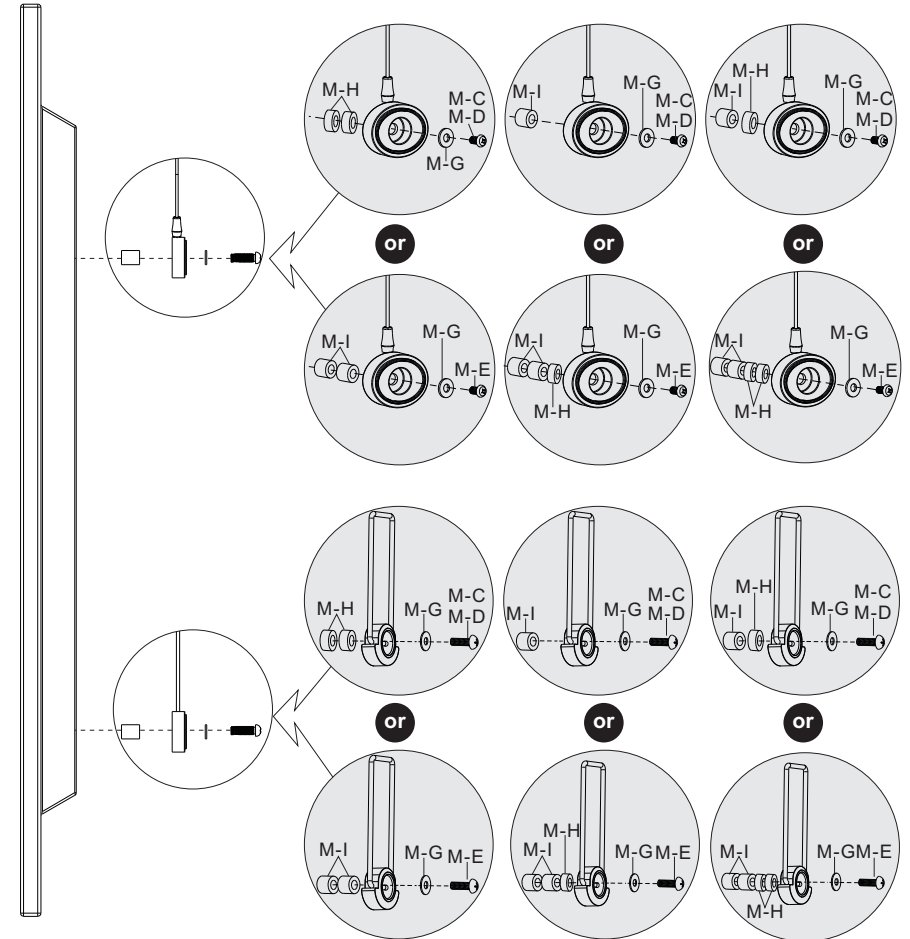
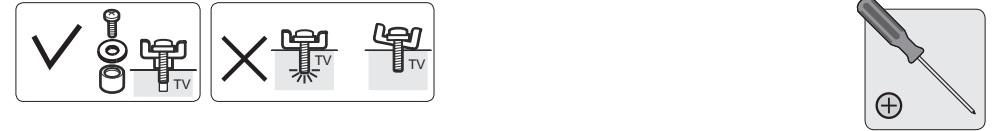
2. Installing the Adapter Brackets



2a For Flat Back Screen



2b For Bump-out or Recessed Back Screen



Note: Choose the appropriate screws, washers and spacers (if necessary) according to the type of screen.

• Screw the supporting spacers onto the TV.

⚠ Tighten all screws but do not over tighten.